

RURAL MATHEMATICS EDUCATION LANDSCAPE



Online Professional Learning for Rural Mathematics Teachers and Instructional Leaders

PROJECT

Are you a 5th–9th grade math teacher or an instructional leader looking to enhance your skills and connect with other educators?

We are offering two years of professional learning designed specifically for mathematics teachers and instructional leaders from grades 5 to 9 in rural communities. **You also will receive a stipend** for participating!

Whether you're looking to refine your teaching strategies, incorporate new strategies, or collaborate with peers, this opportunity is for you!

PROFESSIONAL LEARNING COMPONENTS

1. Online Course: Orchestrating Productive Mathematical Discussions

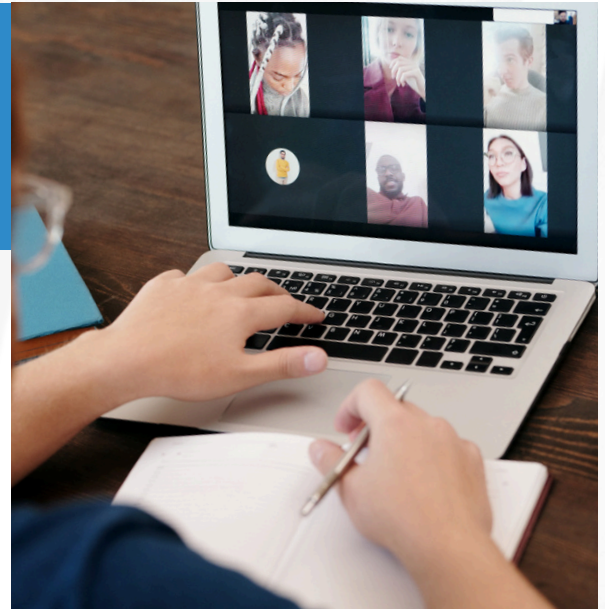
Eight synchronous course sessions (4 per year) to support instruction through the facilitation of mathematical discussions and research-based teaching practices.

2. Online Video Teaching Labs

Four synchronous online teaching video teaching labs (2 per year) to investigate mathematics teaching and learning in grades 5 to 9 mathematics classrooms.

3. 1-on-1 Online Video Coaching for Teachers

Four personalized 1-on-1 coaching cycles (2 per year) to support participants' learning through supported planning, implementation, and reflection.



ADDITIONAL INFORMATION

SYNCHRONOUS DATES

All synchronous components of the project will take place from October 2025–May 2027 (excluding summer months).

STIPENDS

Upon successfully completing the components of the project, participants will receive a \$2,000 stipend.



[CLICK HERE FOR
MORE DETAILED
INFORMATION
ABOUT THE RURAL
LANDSCAPE
PROJECT](#)